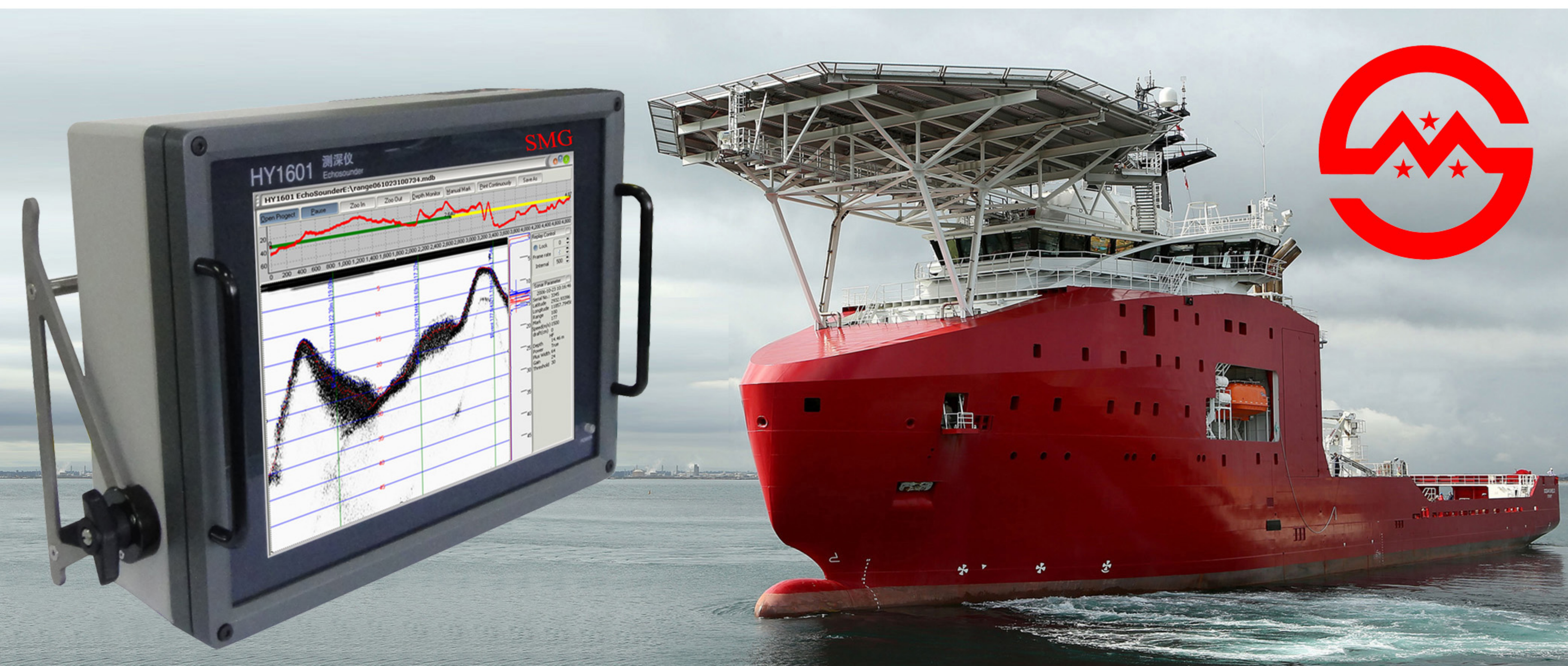


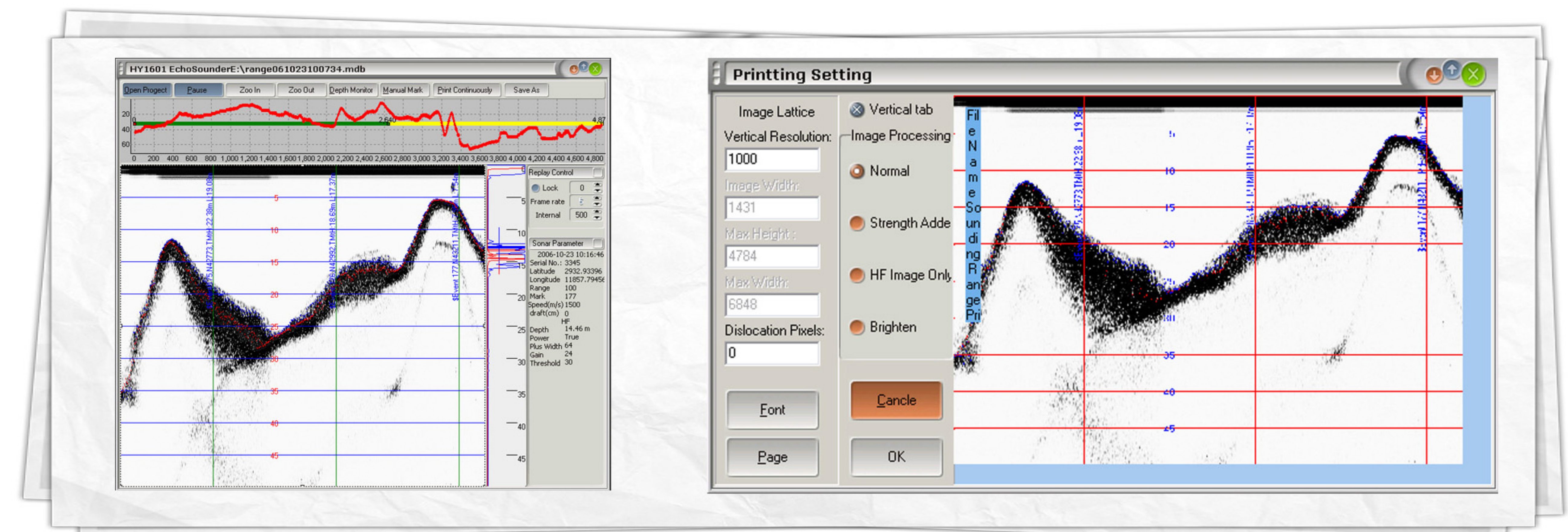
SMART MAX GEOSYSTEMS

HY1601PC PLATFORM DIGITAL ECHOSOUNDER



HY1601 Echo Sounder System, based on the computer platform, with DSP and digital imaging technology, embedded industrial control system and data acquisition software, is a portable and integrated digital echo sounding system. Its main features are as follows: Standard computer for easy operation interface and data storage, advanced bottom digitizer, internal large storage of data to file with time reference, digitized depth, position heave and annotations and it can compatible with all survey software like HYPACK, EIVA and any other software package. It is a perfect choice for surveying in the river, lake and ocean.

- ★ Based on the computer platform
- ★ TVG/AVG dynamic adjustment, reinforced anti-jamming ability
- ★ Low noise receiving ability and space filter, Time filter adjustment
- ★ High speed USB interface, huge storage capacity
- ★ Echogram output for real time display, storage, playback and printing
- ★ Multi-ports communication for GPS, motion sensors and so on
- ★ Bundled data acquisition software like HYPACK, EIVA.
- ★ AC/DC Power supply



SPECIFICATIONS

Frequency: 208KHz
Transducer Beam: 208KHZ, ≤ 8 degrees
Depth range: 0.3m-300m @ 208KHZ
Accuracy: $0.01\text{m} \pm 0.1\%$ @ 208K
Output power: 200W @ 208K
Input Power: 22-31V DC or 180-260V AC
Consumption Power: 100W
Recorder: Large capability hard disk storage

COMPOSITION

Main Unit
Dimensions: $400 \times 130 \times 310\text{mm}$
Weight: 12kg

Transducer
Weight: 1.5kg
Cable Length: 10m (adjustable)

Supporting Tube
Dimensions: $3 \times 0.7\text{m}$
Weight: 5kg



SMART MAX GEOSYSTEMS CO.,LTD

www.smartmaxgeosystems.com info@smartmaxgeosystems.com TEL:+86-0551-65420563

ADD: FLAT 601, 6/F, VASTKIN HOUSE, 84 JERVOIS STREET, SHENG WAN, HONG KONG, CHINA.